

NEWS

QGIS Model Baker

QGIS Anwendergruppe Schweiz - Anwendertreffen 2022

Romedi Filli | Kanton Schaffhausen Amt für Geoinformation | romedi.filli@sh.ch

15. Juni 2022



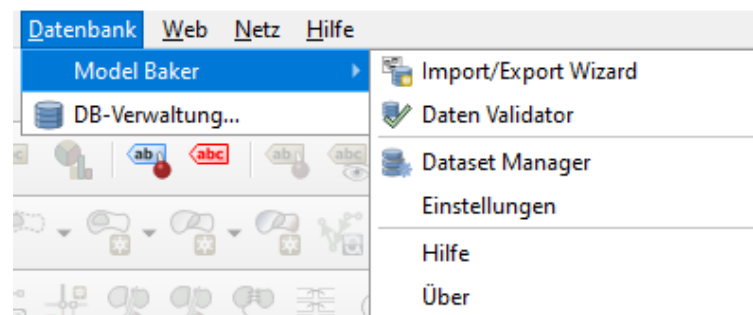
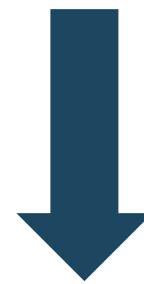
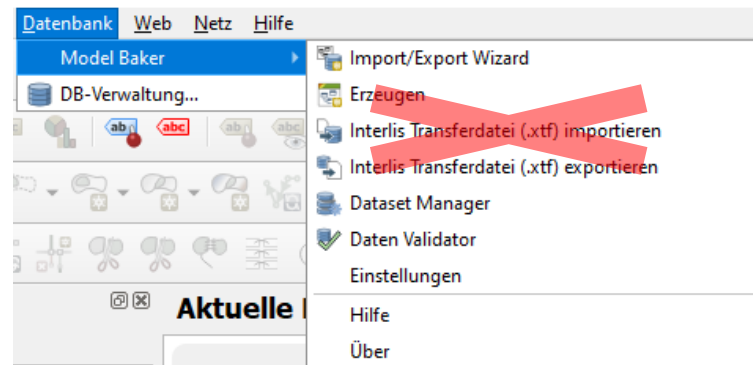
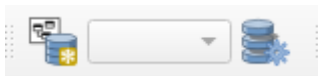


<https://github.com/opengisch/QgisModelBaker/tree/master/branding/logo>





Clean up





Linking Relation Editor (> QGIS 3.22)

Label

Cardinality

Force hide form on add feature

Widget Type

Manage linked features for parent Wildruhezone ""

Routennetz

alp

- Muesalp (669)
- Meerenalp (727)
- Meerenalp (730)
- Meerenalp (726)
- Muesalp (670)
- Meerenalp (732)
- Meerenalp (729)
- Meerenalp (731)
- Muesalp (668)
- Meerenalp (728)
- Meerenalp (724)

Linked children

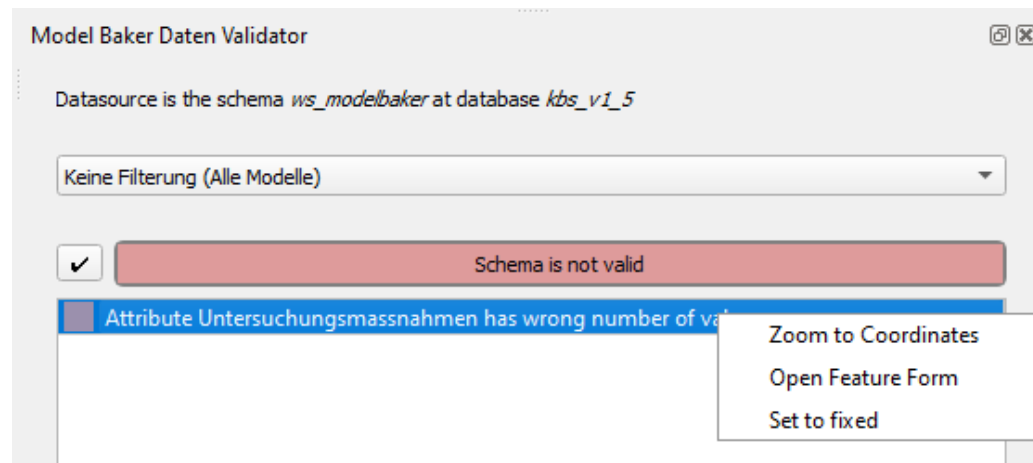
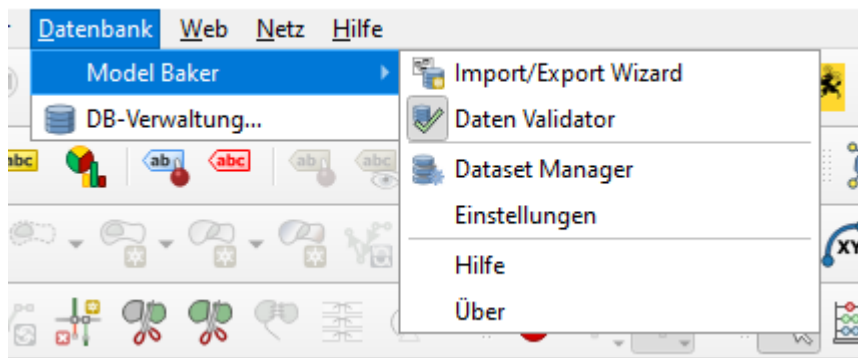
- Mittler Nüen (665)
- Büelser Wald (608)
- Bärenboden (639)
- Meerenalp (725)

Show All Features

Cancel OK



Validator





Dataset & Baskets

Model Baker - Workflow Wizard

Datenimport Konfiguration

Bestimme die Reihenfolge der zu importierenden Dateien (drag'n'drop) und tätige weitere Einstellungen.

Zu importierende Dateien

Importiere Datei	Katalog	Dataset
↑ ↓ kbs_v1_5_SH.tif (C:/Users/rfill/Downloads/kbs_v1_5_SH.tif)	<input type="checkbox"/>	Thurgau
↑ ↓ ch.tg.kataster-belasteter-standorte.geoig_20220517.tif (C:/Users/rfill/Downloads/...	<input type="checkbox"/>	Schaffhau

Dataset Manager

- Baseset
- Thurgau
- Schaffhausen**

Baskets für ausgewähltes Dataset erstellen

Editiere Dataset

Dataset: Schaffhausen

Abbrechen Create Dataset

Topping Transferdaten

[Suche referenzierte Datenfiles vom Usability Hub]

Dataset Manager

< Zurück Weiter > Abbrechen

- Successfully created basket for topic "kbs_V1_5.Belastete_Standorte".
- Successfully created basket for topic "kbs_V1_5.Codelisten".
Done!
> ----- Datenimport Konfiguration

<input checked="" type="checkbox"/>	<input type="checkbox"/>	InBetrieb	<input type="checkbox"/>
<input checked="" type="checkbox"/>	29.05.19	LetzteAnpassung	<input type="checkbox"/>
<input checked="" type="checkbox"/>	StaoTyp1	Standorttyp	<input type="checkbox"/>
<input checked="" type="checkbox"/>	t_basket	Thurgau (kbs_V1_5.Belastete_Standorte)	<input type="checkbox"/>
	Thurgau (kbs_V1_5.Belastete_Standorte)	url_kbs_auszug_de	<input type="checkbox"/>
	Schaffhausen (kbs_V1_5.Belastete_Standorte)	url_kbs_auszug_fr	<input type="checkbox"/>
	//map.geo.tg.ch/apps/kbs/services/kbs/print/kbs_tg_4546_D_01.pdf	url_kbs_auszug_rm	<input type="checkbox"/>
	ces/kbs/print/kbs_tg_4546_D_01.pdf	url_kbs_auszug_rm	<input type="checkbox"/>
	NULL	url_kbs_auszug_rm	<input type="checkbox"/>



Usability Hub – it works

Model Baker - Workflow Wizard

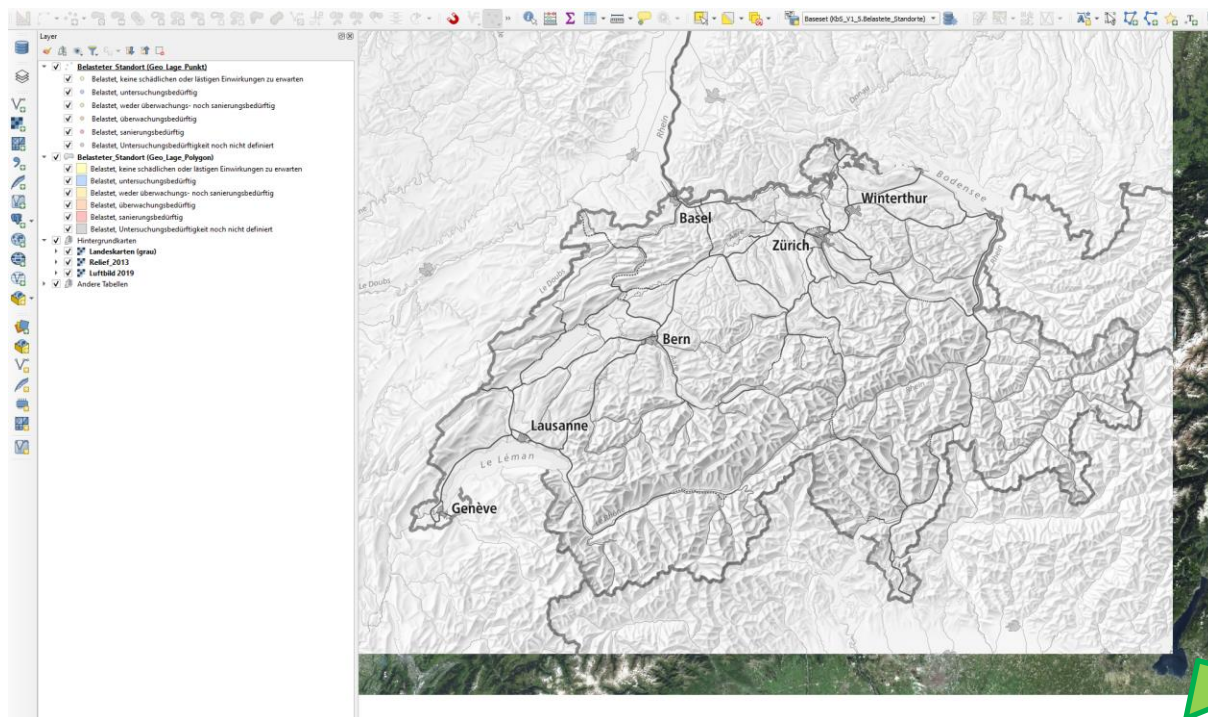
Source Selektion

Füge die Dateien und die Models aus den Repositorien hinzu.

Model oder Transferdatei: KbS_V1_5



KbS_V1_5



Model Baker - Workflow Wizard

Schema Import Konfiguration

Konfiguriere deine Datenbankanzeugung.

Modelle, um die Datenbank zu erstellen.

- KbS_V1_5
- KbS_V1_5 (C:\Users\rfilli\liloppingfiles\cache\models.opengis.ch\sh_kbs_v1_5\referencedata\KbS_C

Metakonfiguration / Topping: QGIS metaconfig file for SH_KbS_V1_5 - sh_kbs_v1_5

KBS: EPSG:2056 - CH1903+ / LV95

Extra Model Informationsdatei: ../sh_kbs_v1_5/metaattribute/KbS_V1_5.toml

Aktuelle Metakonfigurationsdatei: QGIS metaconfig file for SH_KbS_V1_5 - sh_kbs_v1_5 (SH_KbS_V1_5.qgis_metaconfig_

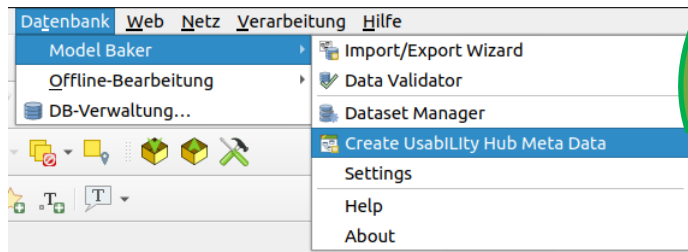
[Erweiterte Optionen](#)

< Zurück Weiter > Abbrechen

Aktualisiere verfügbare Modelle:
- Füge (Repository) Model hinzu KbS_V1_5
- Füge (XTF Datei) Model hinzu KbS_V1_5 von C:\Users\rfilli\liloppingfiles\cache\models.opengis.ch\sh_kbs_v1_5\referencedata\KbS_Codetexte_V1_5_20211015.xml
Metakonfiguration erfolgreich geladen.



Coming up – UsabilityHub Exporter



```
wildruhezonen/  
├─ ilidata.xml  
├─ freddys_wildruhezonen_projekt  
│  └─ metaconfig/  
│     └─ fred_wrz_config.ini  
│  └─ qml/  
│     └─ fred_wrz_routennetz.qml  
│     └─ fred_wrz_teilgebiet.qml  
└─ sql/  
   └─ thescript.sql
```




For the experts: modelbaker – the library

<https://pypi.org/project/modelbaker/>

modelbaker 1.1.2




Released: May 16, 2022


`pip install modelbaker` 

The full model baker core


Navigation

 Project description

 Release history

 Download files

Project links

 Homepage

Project description



modelbaker - the library



Questions

